

1333

NORCEH INTERNATIONAL Ltd (e.u.)
BURMAH OIL EXPLORATION LIMITED
 PETROSIVEBE A.B.
COMPOSITE WELL LOG

CARLOTTA 1

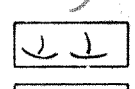
COUNTRY : ITALY

GRAPHIC LITHOLOGY SYMBOLS

PERMIT : BR122 CG. OFFSHORE ADRIATIC (NORCEH INT. Ltd - e.u.)

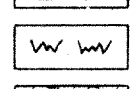
LITHOLOGICAL TYPES

LOCATION : 43° 31' 12.83" N, 13° 43' 30.20" E



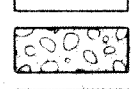
Fossil fragments

ROTARY TABLE ELEVATION : 24.7m (AMSL)



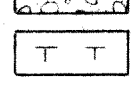
Silt

WATER DEPTH : 15.70m



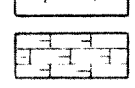
Conglomerate

SPUDED : 17th. JUNE 1978



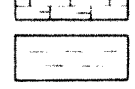
Marl

REACHED TOTAL DEPTH : 26th. JUNE 1978



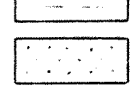
Calcilutite

WELL ABANDONED : 30th. JUNE 1978



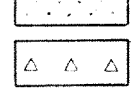
Claystone

RIG RELEASED : 1st. JULY 1978



Sandstone

TOTAL DEPTH : 536m (RT)



Chert

RIG : PANON, I.N.A. YUGOSLAVIA

POROSITY TYPES

DRILLING CONTRACTOR, MUD LOGGING, CEMENTING : I.N.A.

i Intergranular

LOGGING : SCMLUMBERGER

f Fracture

WELL SITE GEOLOGIST : B. GROSSI

v Vugular

sk Inter-skeletal

ic Inter crystalline

m Moldic

COMPOSITE LOG COMPILED BY : C.A. MITCHELL

ENGINEERING DATA

Casing shoe Plugged interval

CASING	SPONTANEOUS POTENTIAL	GRAPHIC LITHOLOGY	DEPTH MKB	RESISTIVITY	POROSITY	GAS READINGS & SHOW	LITHOLOGICAL DESCRIPTION	FORMATION	AGE
		NO RETURNS TO 110 METRES	0 - 100			100 000 TOTAL GAS			
Bridge Plug 82m			100 - 109			C ₁ -34 000 PPM C ₂ -4 NIL	SHELLS, recent, fragmented with: SILT, white, unconsolidated 10%		RECENT
			109 - 150			C ₁ -34 000 PPM C ₂ -4 NIL	Gravel, white to grey granule size well sorted s.a to s.r; unconsolidated		
			150 - 200			C ₁ -4 NIL	CLAYSTONE, calcareous, medium grey moderately hard, grading to MARL medium grey moderately hard	SCHLIER	LOWER MIOCENE
Plug 197 225m 65m			200 - 250				MARL, light grey to brown grey, slightly silty, moderately hard, with CALCILUTITE light grey, mod. hard 10-50%	BISCIARO	
			250 - 300				CLAY, light grey, calcareous, soft grading down to; MARL, light grey to brown grey, slightly silty, moderately hard	SCAGLIA CINEREA	OLIGOCENE
			300 - 350				CALCILUTITE, light grey, argillaceous moderately hard, with: CLAYSTONE, light brown, silty, slightly calcareous, moderately hard, 10% decreasing with depth		UPPER EOCENE
Plug 13% 245m			350 - 400				MARL to LIMESTONE argillaceous, moderately hard, with: SANDSTONE lt. to f. gr. trace	SCAGLIA ROSSA	MID. & LOW. EOCENE
			400 - 450				CALCILUTITE, wh. to lt. gy hard, with calcite veins pyrite, chert and sandstone traces	SCAGLIA BIANCA	PALAEOCENE UPPER CRETACEOUS
			450 - 500				MARL grey brown silty	MARNE A FUCOIDI	
			500 - 536.2				CALCILUTITE lt. grey to medium grey, with from 300-315m; CALCILUTITE grey brown to dark brown, hard trace up to 10%		
Plug 476-536.2 117.5m			536.2 TD				CALCILUTITE, white to light grey hard with: CHERT, light brown to grey, trace to 5%	MAIOLICA	LOWER CRETACEOUS
							CALCILUTITE, white to light grey, hard with: CHERT, light brown, trace to 20%		
							CALCILUTITE white to light grey, occ. light green with: CHERT, light brown, trace to 15%		
							CONGLOMERATE, vari coloured, pebble size, well varied, grains of MARL SILTSTONE & IGNEOUS or METAMORPHIC ROCK	?	OLIGOCENE OR YOUNGER