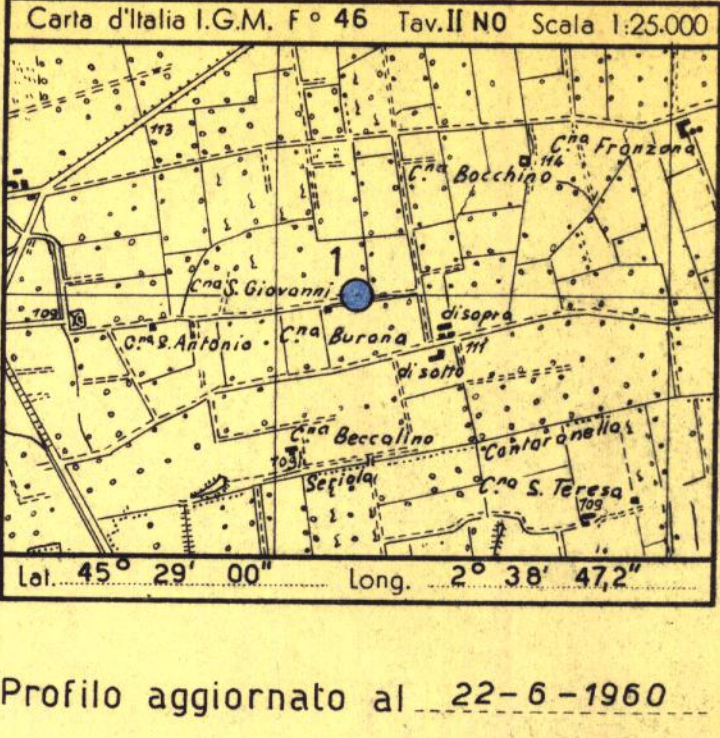


CANTIERE di ANTEGATE

POZZO N° 1

EX PROF 1098



Profilo aggiornato al 22-6-1960 da BASTIANINI - CORRIERI

Compilato da CORRIERI

Geologo di cantiere CORRIERI

Visto da ... Disegnato da ...

Legend table with symbols for geological features like Ghiaie, Sabbie, Argille, and various types of water and gas traces.

Impianto IDECO H-525 Inizio perforazione 29-5-1960 Intervallo in produzione Pozzo sterile

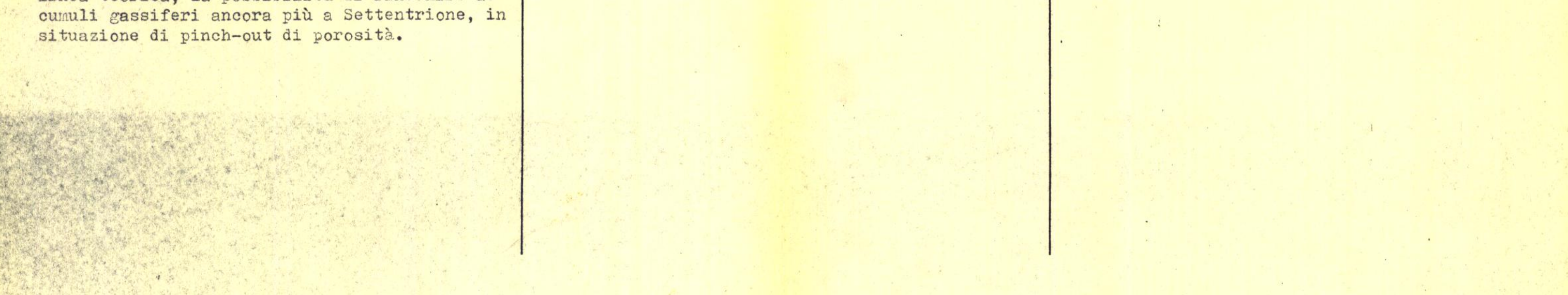
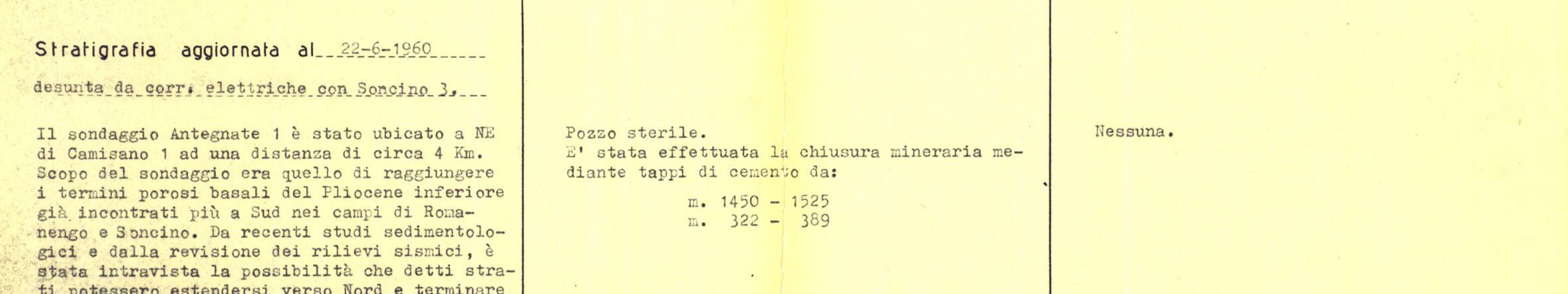
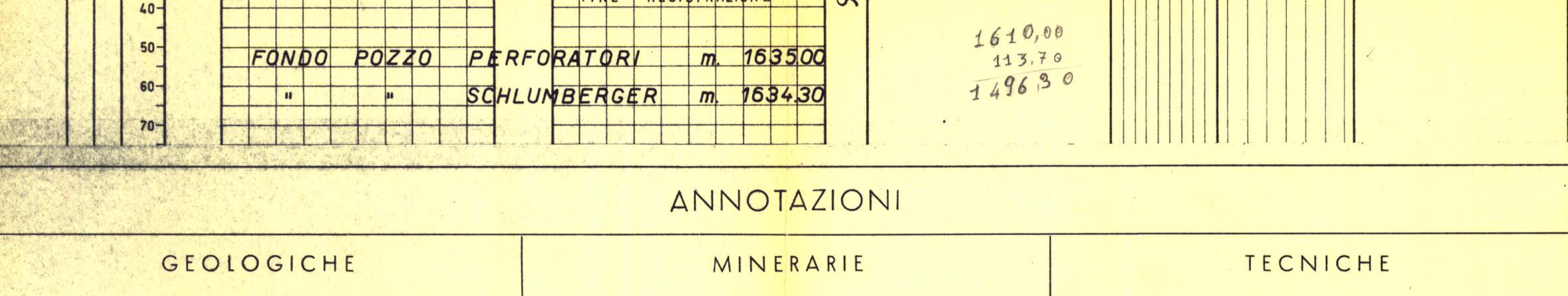
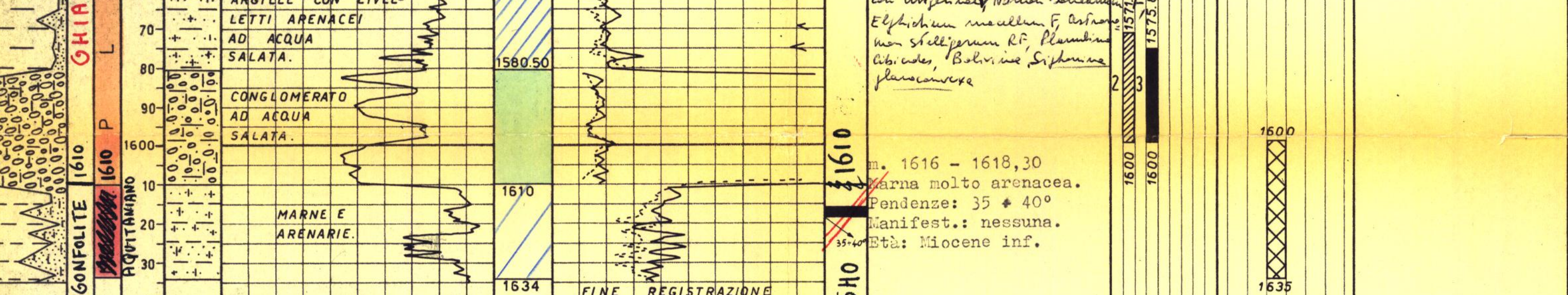
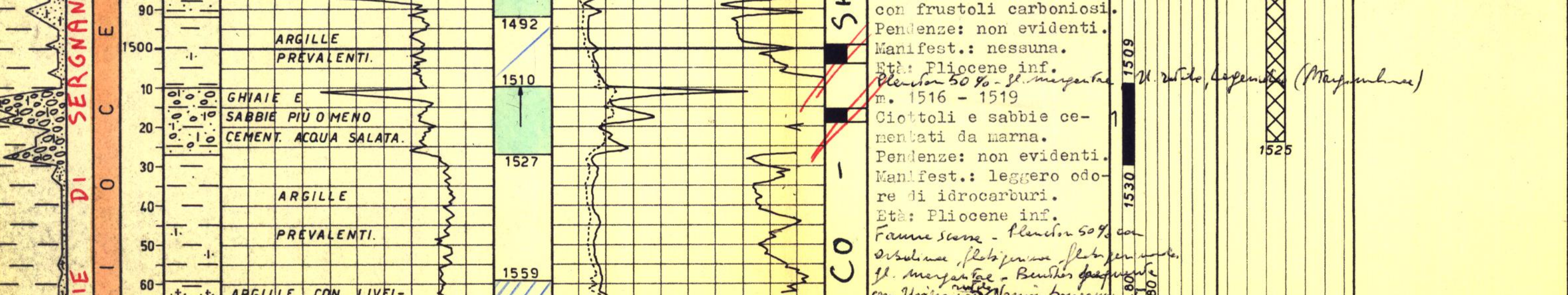
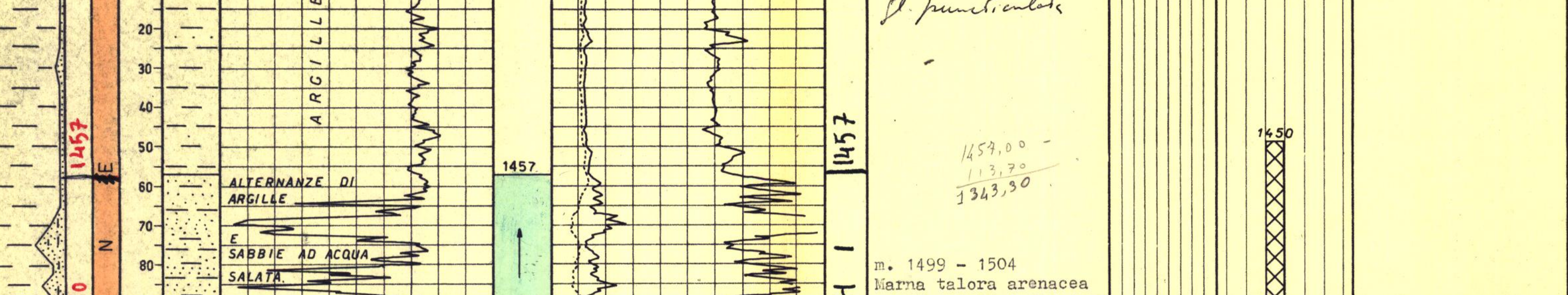
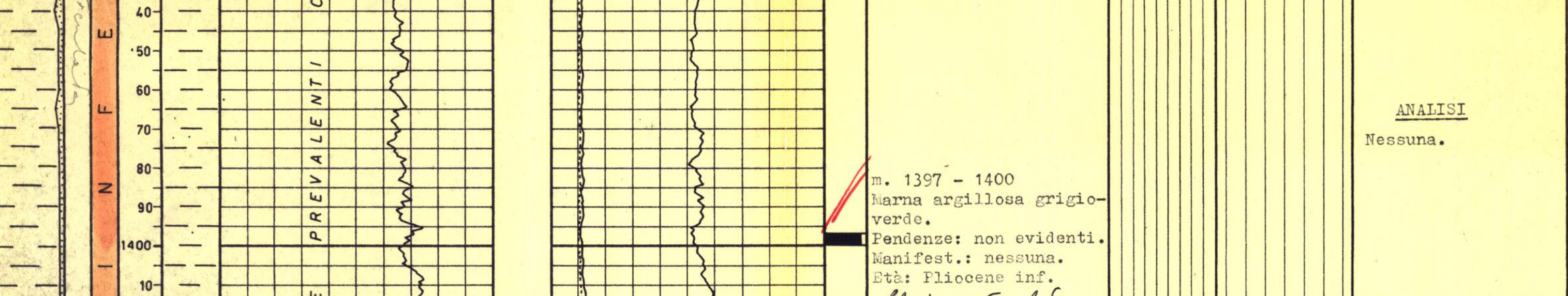
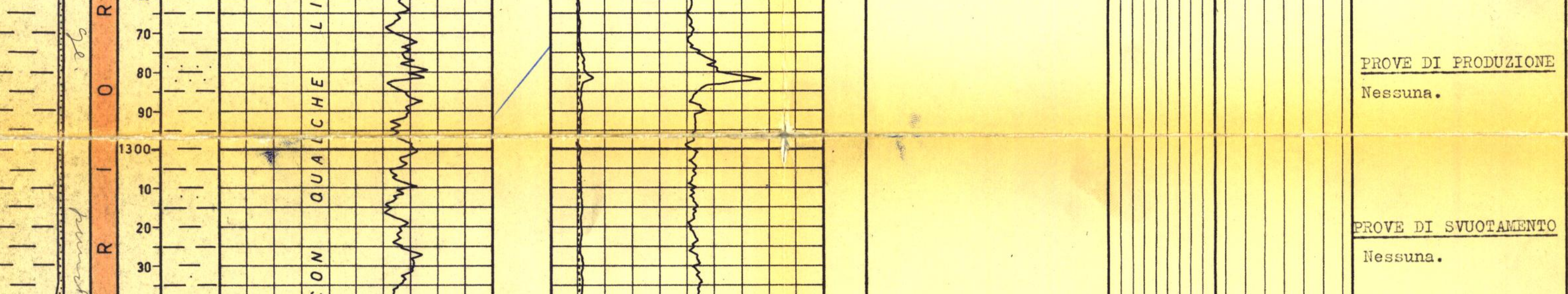
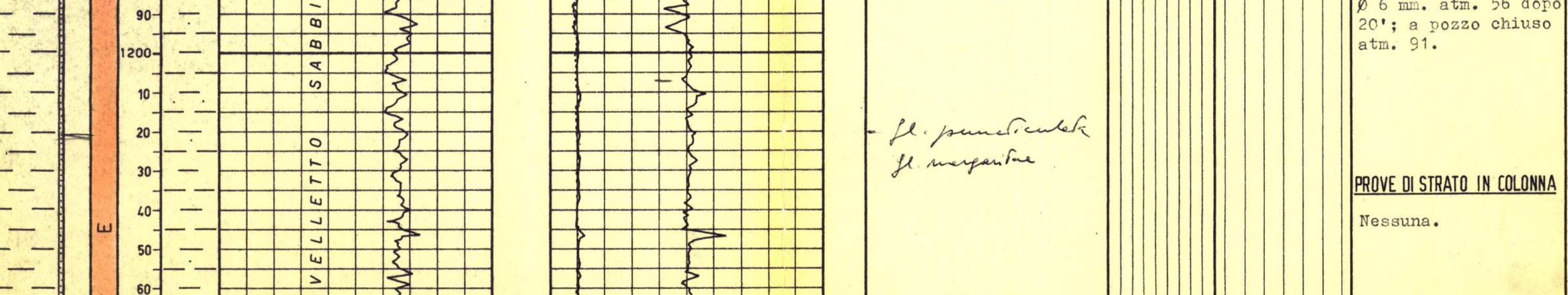
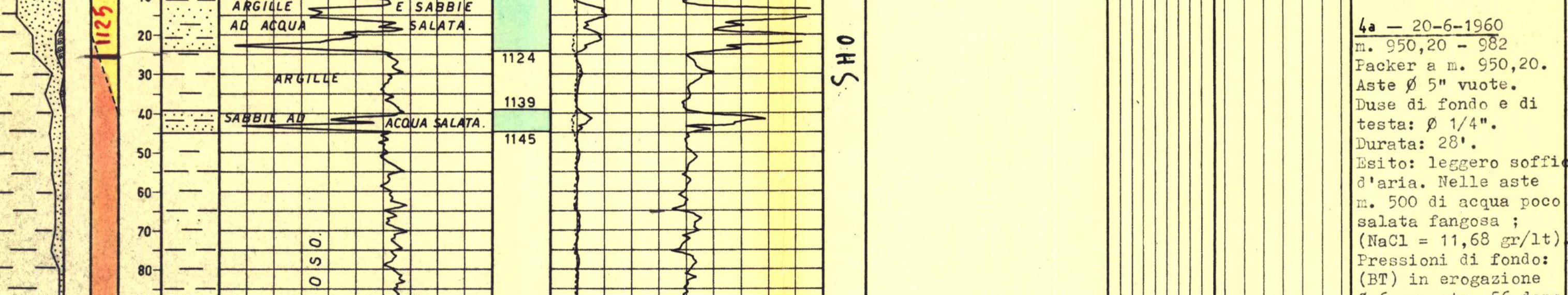
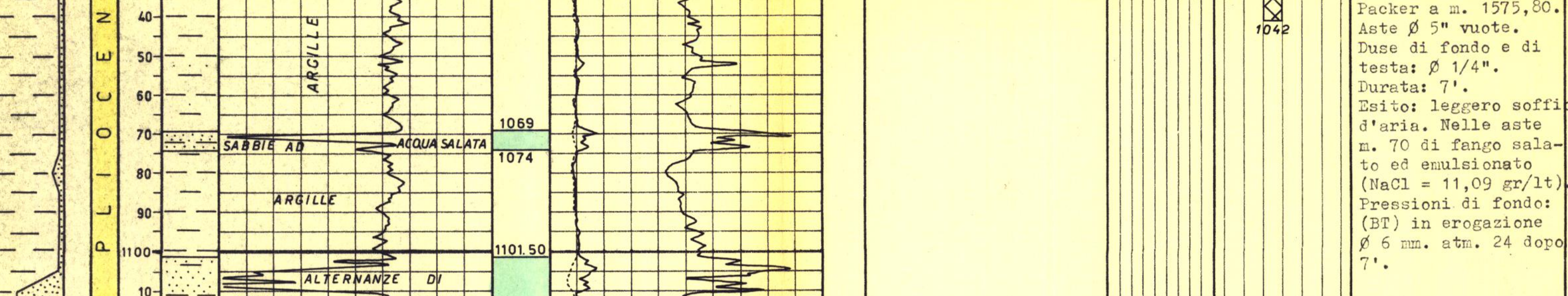
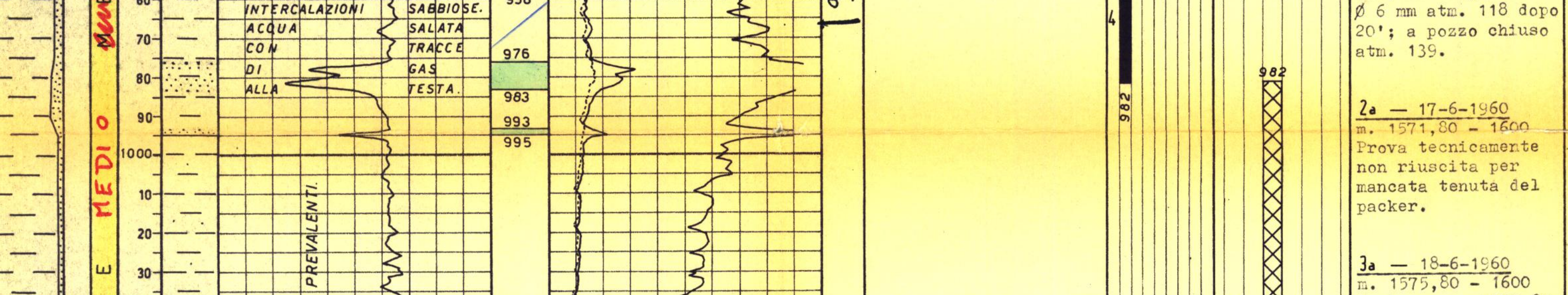
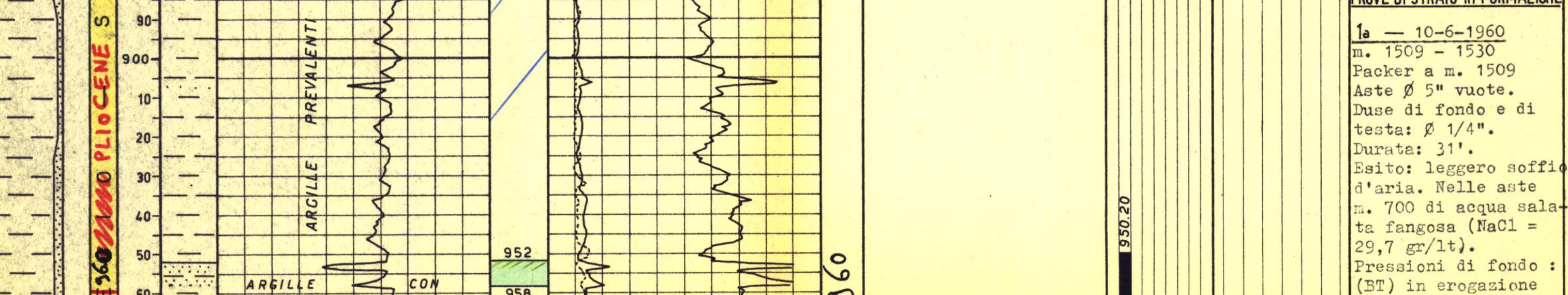
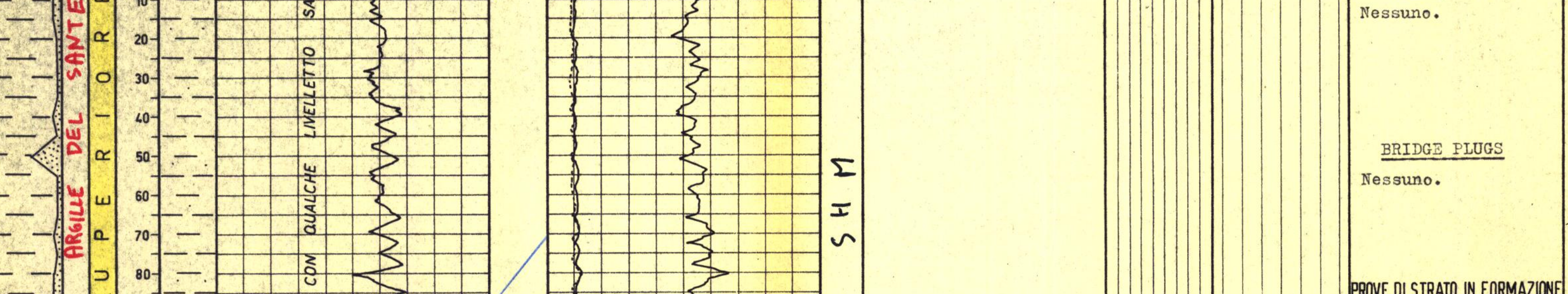
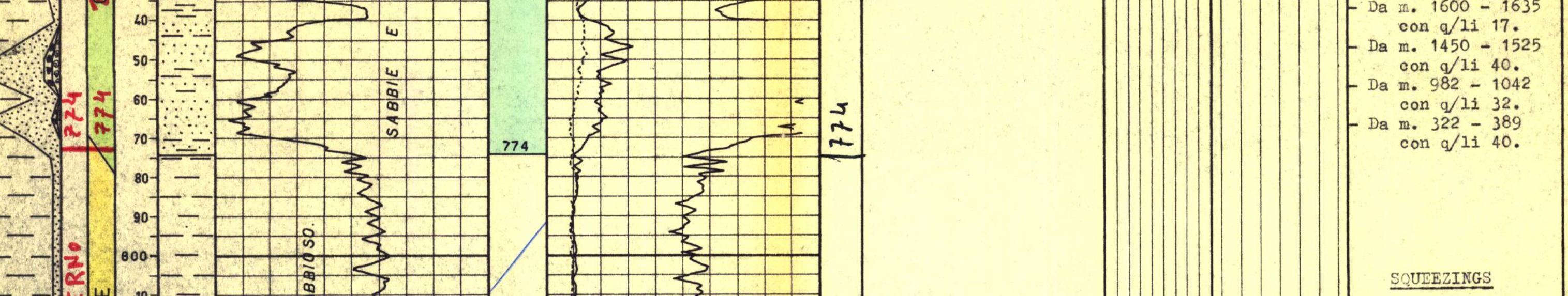
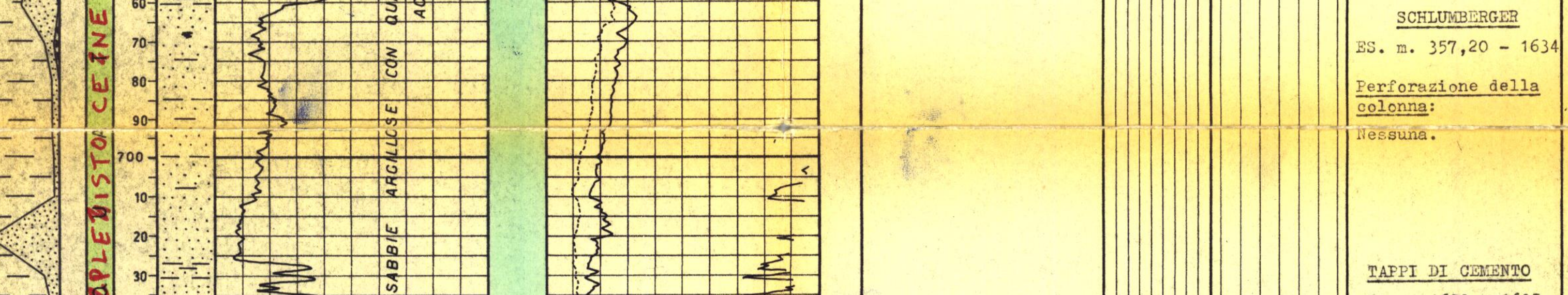
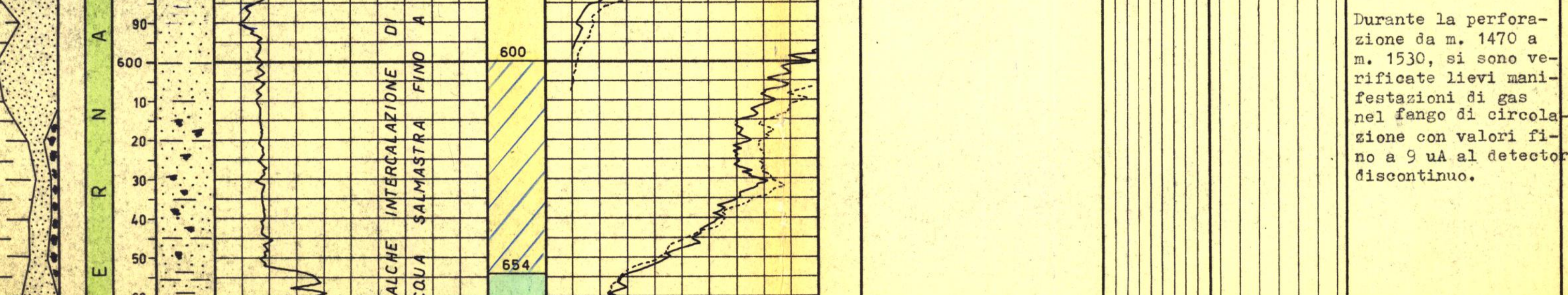
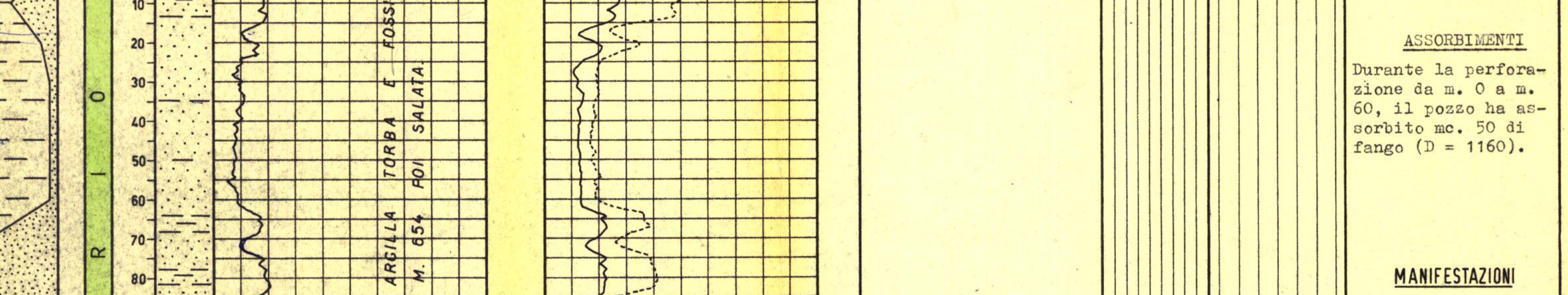
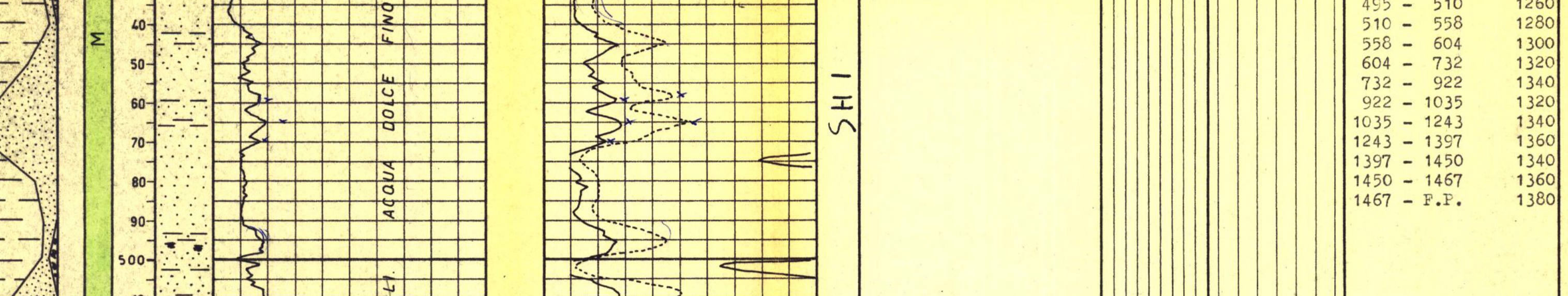
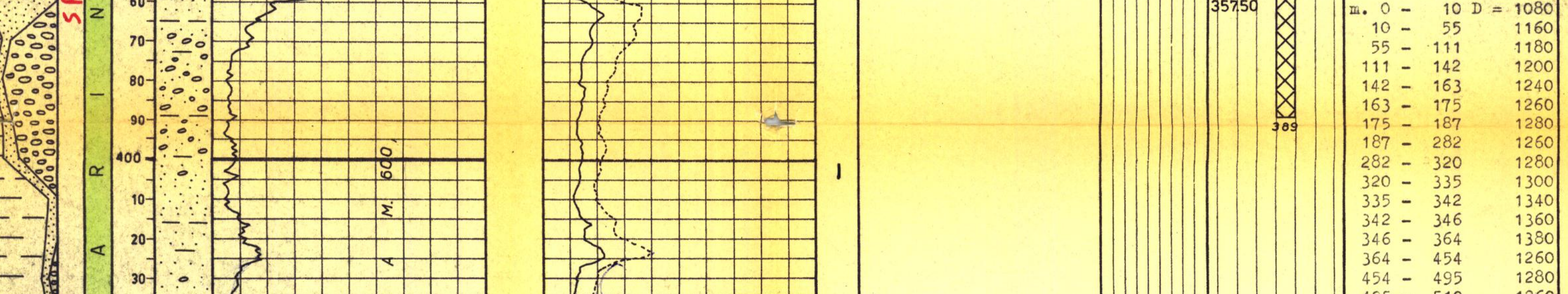
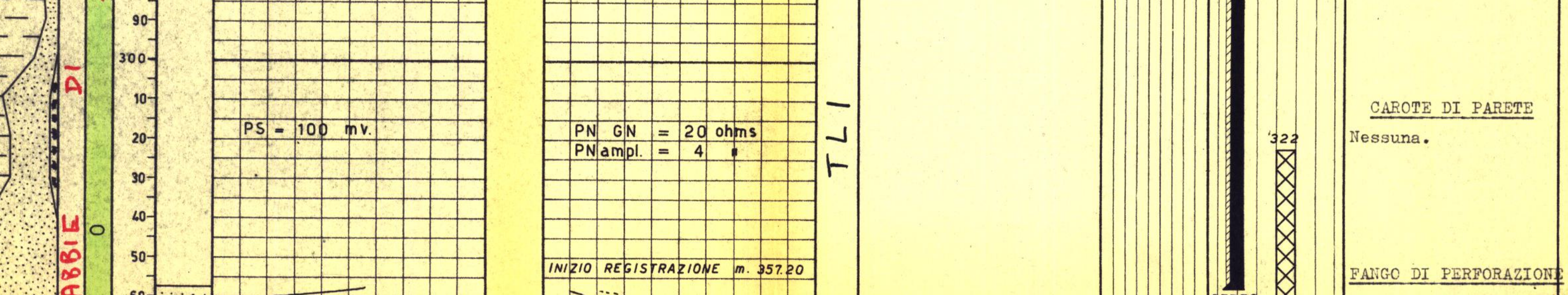
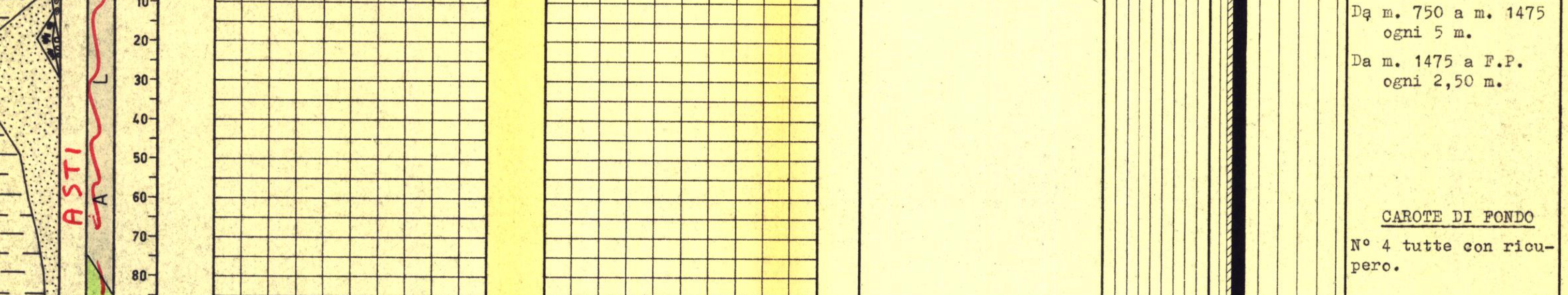
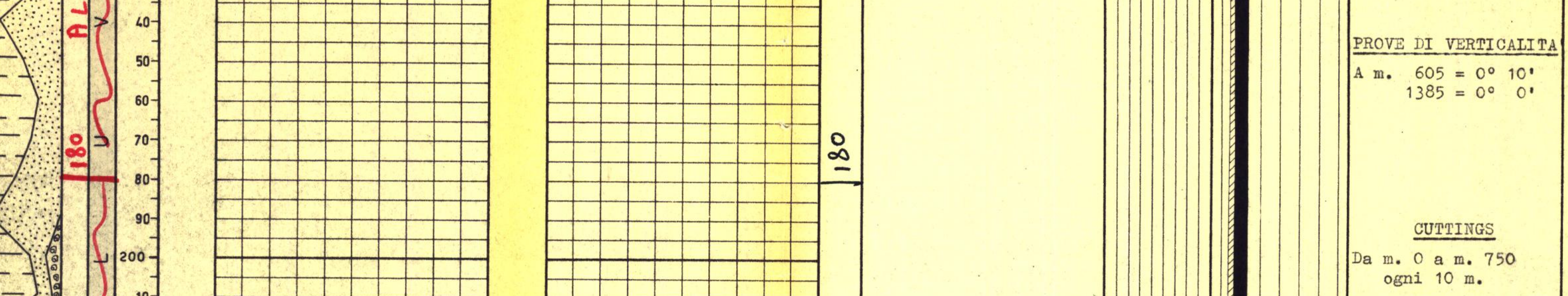
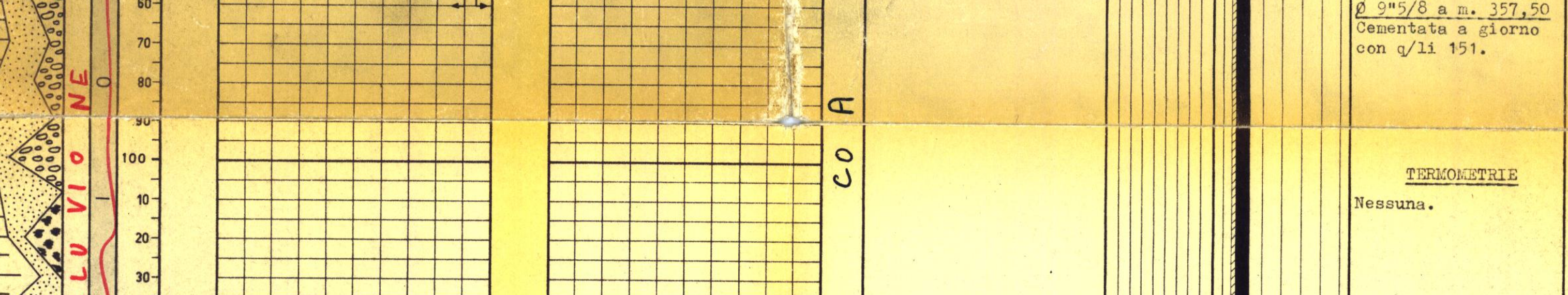
Profondità totale m. 1635 Ultima perforazione 15-6-1960

QUOTA s.l.m. Tavola Rotary m. 11370

Prima flanga m. 10920 Piano terra m. 11000

DIAGRAMMA SCHLUMBERGER

Table with columns for POTENZIALE SPONTANEO, RESISTIVITA, and DESCRIZIONE LITOLOGICA.



FONDO POZZO PERFORATORI m. 163500 SCHLUMBERGER m. 163430

ANNOTAZIONI

Stratigrafia aggiornata al 22-6-1960 desunta da corr. elettriche con Sencino 3...

Pozzo sterile. E' stata effettuata la chiusura mineraria mediante tappi di cemento da:

Nessuna.

GEOLOGICHE

MINERARIE

TECNICHE