

POZZO A.R17 AV/1 AMETISTA 1 (JOINT VENTURE AGIP-SHELL-SNIA)

ROCCHE TERRIGENE: Diagram showing various sedimentary rock types with their respective symbols and colors.

ROCCHE CARBONATE: Diagram showing carbonate rock types with their respective symbols and colors.

PARTECILLE: Diagram showing various particles and their symbols.

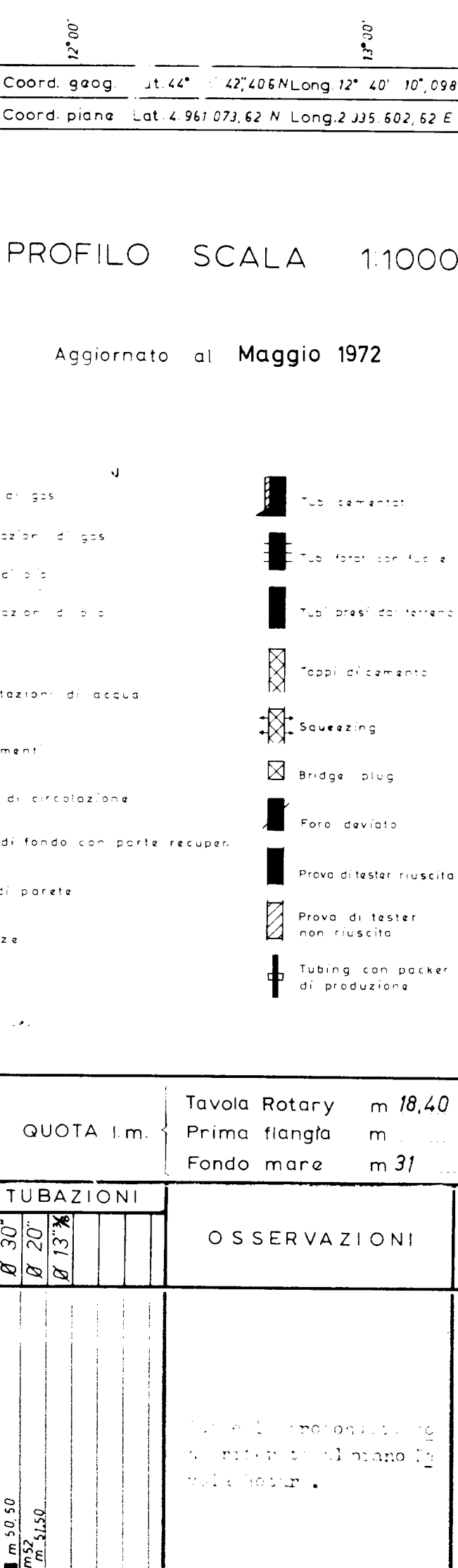
STRUTTURE SEDIMENTARE: Diagram showing sedimentary structures with their respective symbols.

ROCCHE IGNEE E METAMORFICHE: Diagram showing igneous and metamorphic rocks with their respective symbols.

ALTREROCCE SEDIMENTARE: Diagram showing other sedimentary rocks with their respective symbols.

POROSITA: Diagram showing porosity types with their respective symbols.

MINERALIZZAZIONE: Diagram showing mineralization types with their respective symbols.



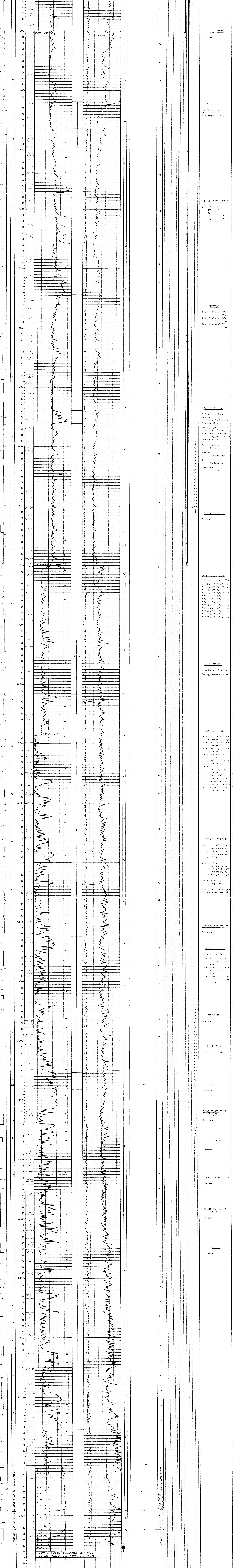
Aggiornato al Maggio 1972

Impianto PERRO NEGRO-SAIEM Inizio perforazione 12 APRILE 1972 Risultato del pozzo STERILE

Prontezza totale m 2856 Fine perforazione 26 APRILE 1972 Situazione del pozzo CHIUSO MINERARIAMENTE

Quota m Tavola Rotary m 18,40

Fondo pozzo m 31



FOSSILIFERA: List of fossiliferous zones including SIA BELLIA, CONNIZIA, etc.

FONDO POZZO SCHLUMBERGER m 2851

FONDO POZZO PERFORATORI m 2856

AGIP-SHELL-SNIA